

# Federation Mining

## Snowy River Mine – Next Steps

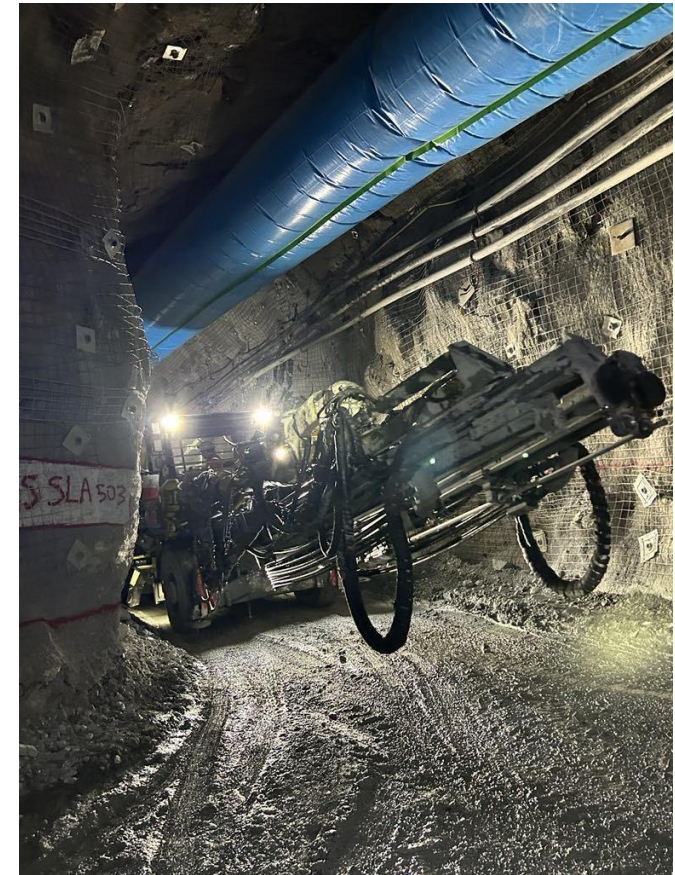
AusIMM Conference – Wellington August 2024  
August 2024



# Snowy River Mine Updates

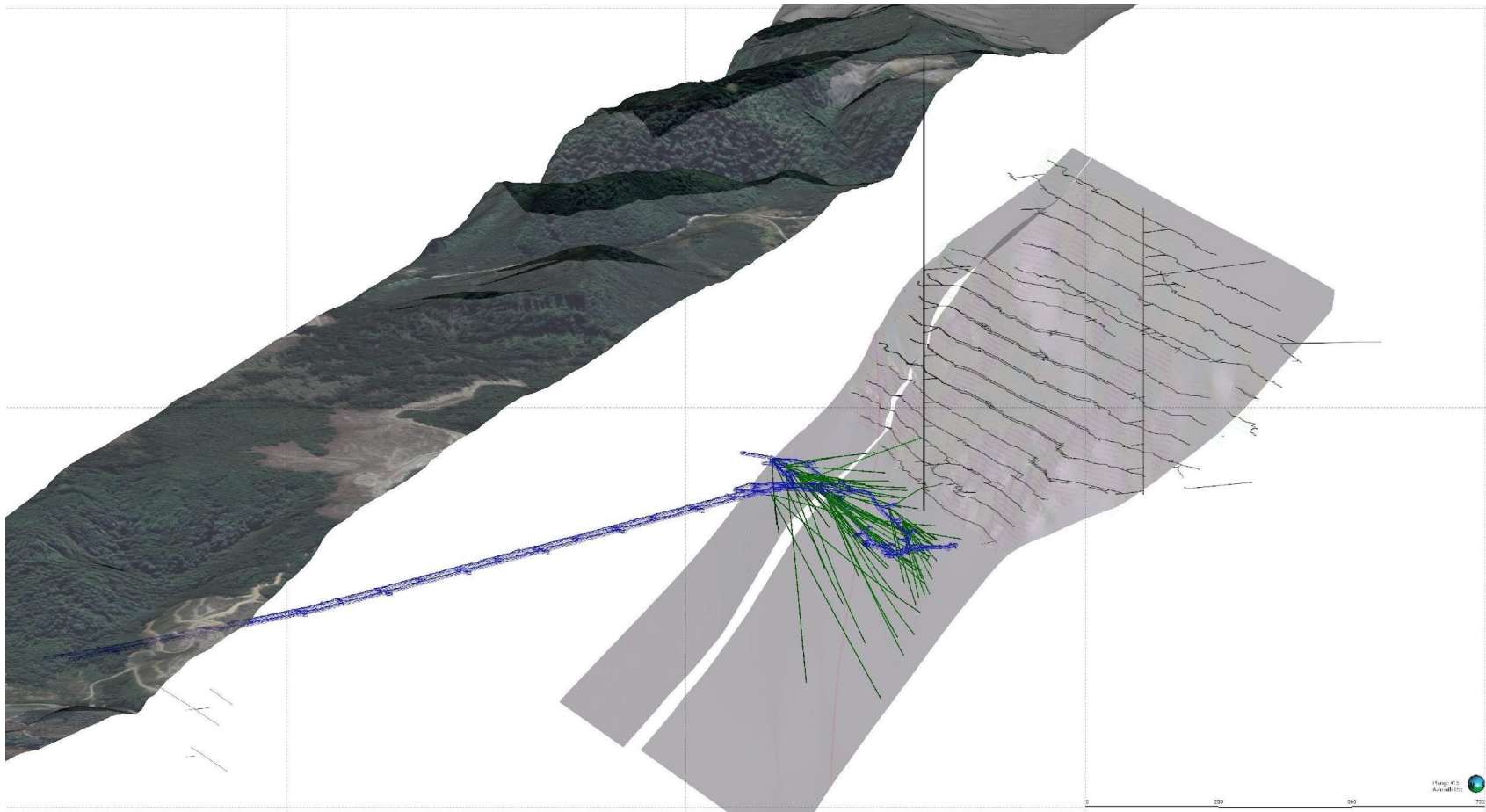


- NZ\$39 million contribution to regional NZ economy, of which \$13 million on West Coast and \$8 million on wages.
- Employment for over 70 people onsite, over 70% reside on the West Coast.
- Over 10,000 m of safe decline development across the twin declines.
- The Birthday Reef was intercepted in Feb 2024. Some ore has now been extracted for bulk met test work.
- Major Resource drilling program completed in December. Additional deeper drill program is now underway (Panel B).
- Dewatering has commenced with support of specialist contractors.
- Federation purchased the asset from OceanaGold in May 2024.
- Stantec appointed to engineering package, Construction of the plant planned to commence in 2025.
- Funding package from AustralianSuper April 2024. Advanced discussions with other potential investors continue.



# Snowy River Isometric

View looking North



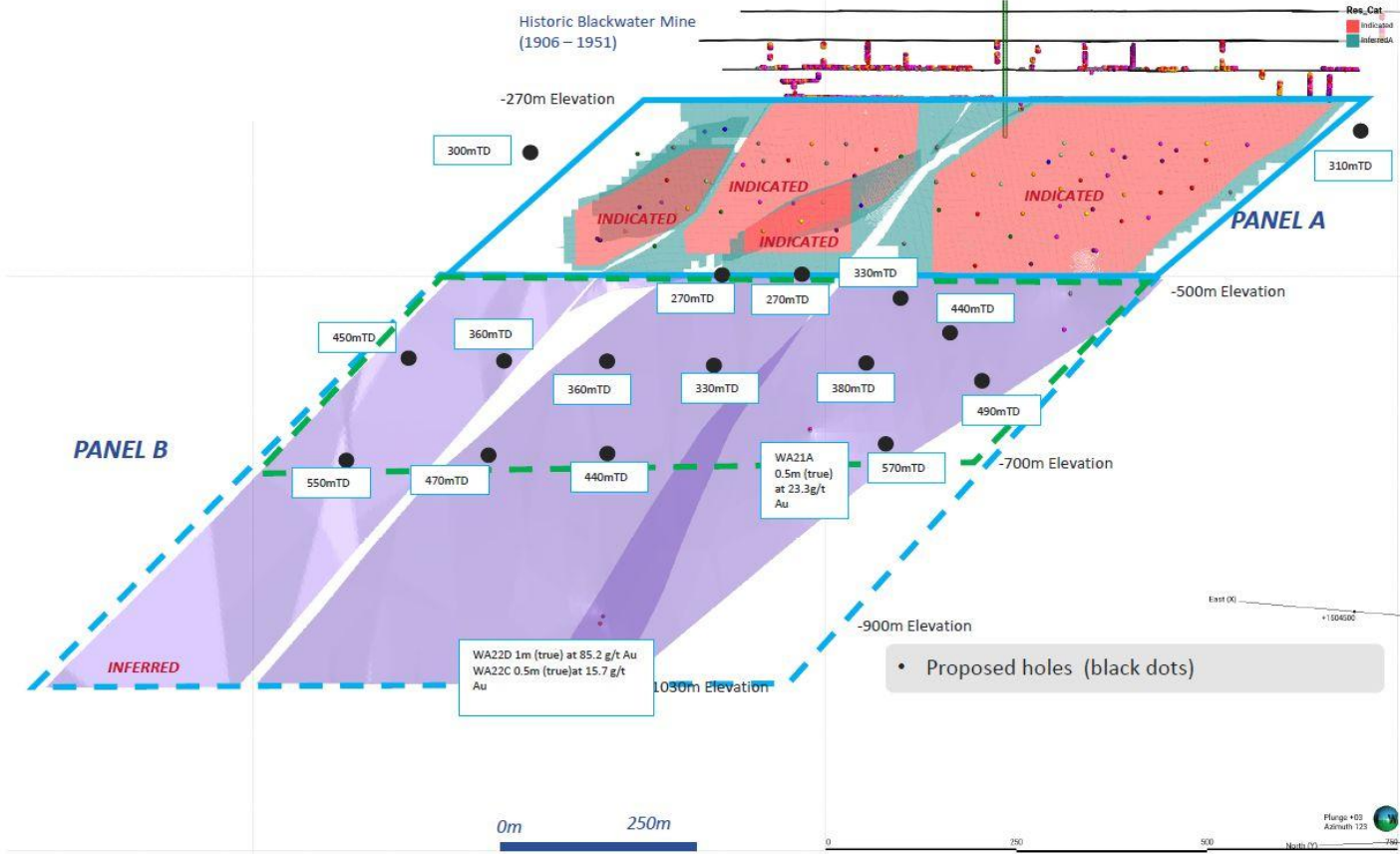
# Resource Model Summary



	Reserve	Indicated Resource	Inferred Resource
Tonnes (t)	368,220	224,000	796,000
Grade (g/t)	10.8	24.6	24.0
Ounces	128,229	177,000	608,000

- 2014 OceanaGold PEA Inferred Resource estimate – 940kt @ 23 g/t for 695koz
- 2023 drilling program totalled 70 drill holes for 15,000m, extending 230m below Blackwater Mine historical workings (Average spacing 50m)
- PFS completed April 2024 generated 128koz of JORC Reserves
- 12% increase in the Mineral Resource Estimate (MRE) from previous OGL estimate
- MROR Competent Person – Don Maclean – Head of Geology and Exploration

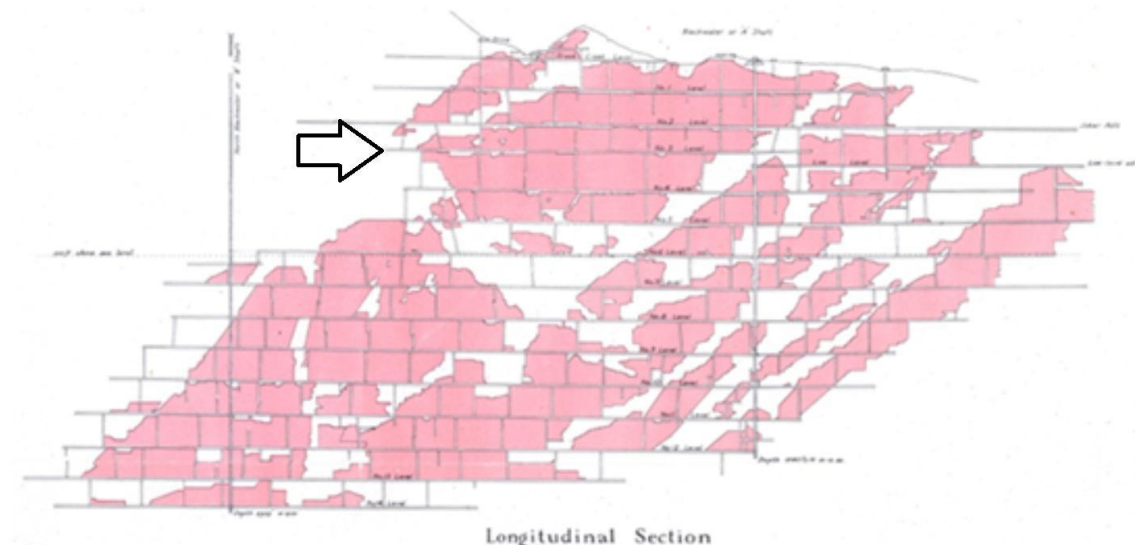
# Panel B Drill Program



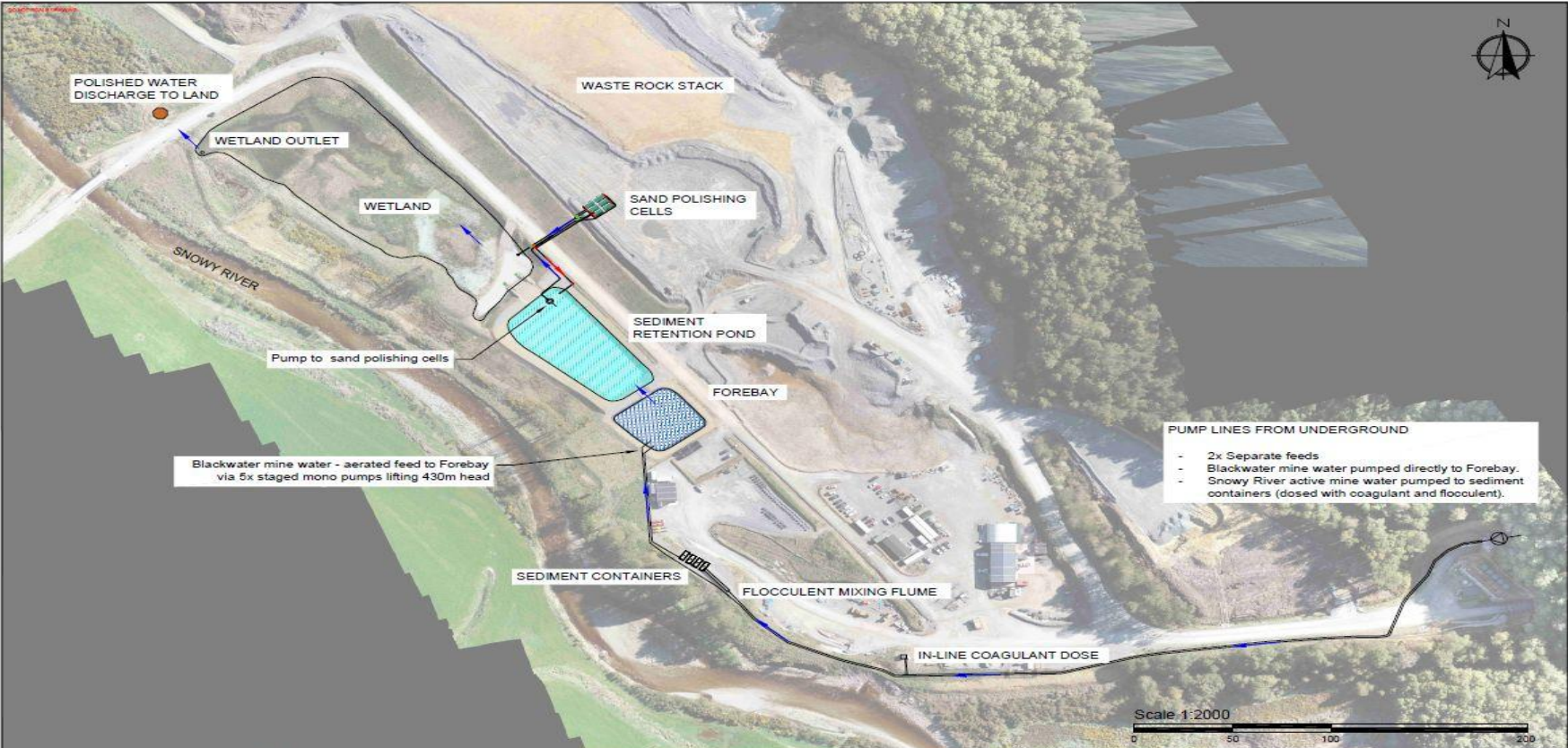
# Dewatering Update



- Over 21 million litres pumped out so far
- Value work control and reduce water pressure (49 bar)
- Water is released into open tank then pumped to surface
- Process is controlled and monitored remotely
- Water treatment occurs on surface
- Estimated time frame to dewater is at approx. months 6 months.



# Surface Water Management



Blackwater mine water - aerated feed to Forebay via 5x staged mono pumps lifting 430m head

- PUMP LINES FROM UNDERGROUND
- 2x Separate feeds
  - Blackwater mine water pumped directly to Forebay.
  - Snowy River active mine water pumped to sediment containers (dosed with coagulant and flocculent).

	PROJECT:	SNOWY RIVER MINE			DATE:	30/10/2023
	DESIGN:	MINE DEWATERING TREATMENT			SCALE:	1:2000
					DRAWN:	A. Mayhead
					REVIEWED:	
	1	FOR REVIEW	AM	OCT23		
	NO.	REVISION	BY	DATE	SURFACE LAYOUT	
					DRAWING NO.:	01
					REV.:	1

# Process Plant design simulations





# Process Plant design simulations

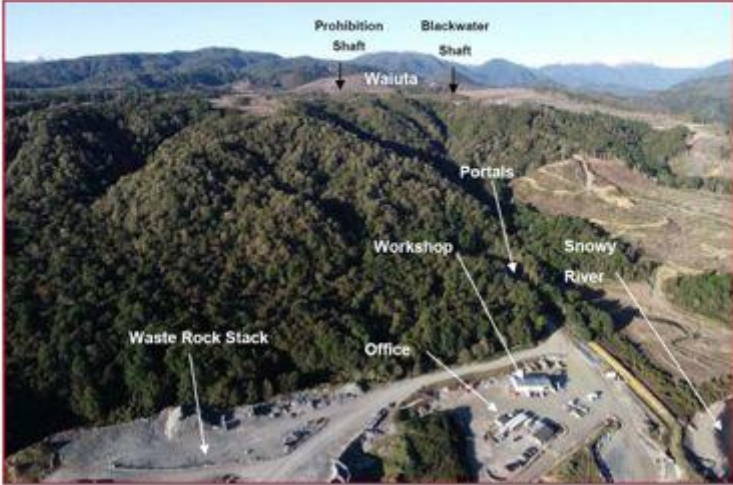


# Proposed Development Plan & Timetable



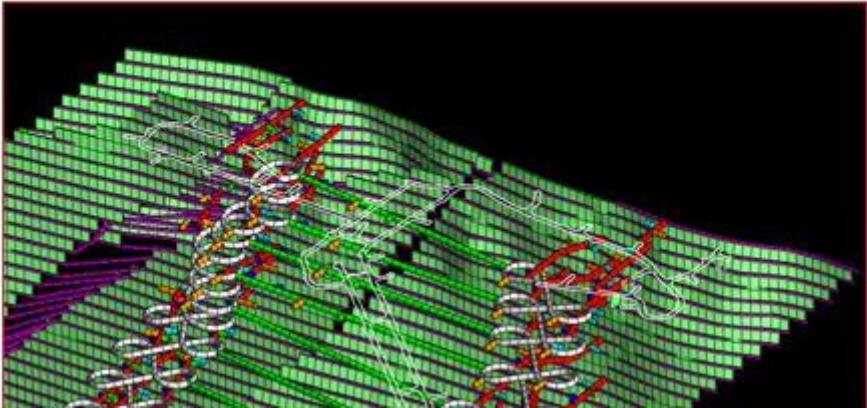
2024

- Resource Model
- Dewatering Drilling
- Updated Mineral Resource
- Decision to Mine
- Ore Development H2 2024



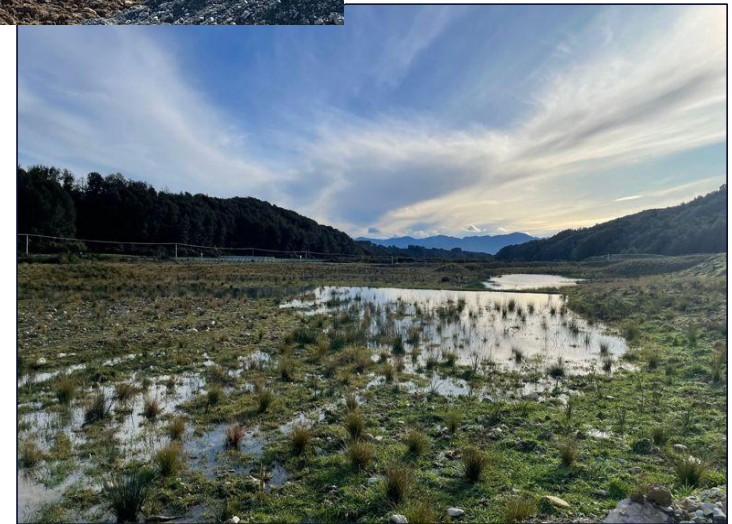
2025

- UG Stoping
- Mill Construction
- First gold – December 2025
- Production ~60koz – 70koz Au p.a.
- ~10 – 12 year mine life based on business case



# Environment

- Water is our key focus.
- Water treatment infrastructure.
- The team have continued to undertake surface environmental and ground water monitoring.
- 12,500 trees and plants on site
- Pest control and weed management.
- Consent liaison group meets twice per year.
- Emissions data tracked and reported
  - Low carbon intensity with estimated 0.03 tonnes of GHG emissions per ounce.
  - 0.56 tCO<sub>2</sub>e per metre advanced.



# Stakeholder



- The host communities in which we operate continue to be of great importance to Federation.
- We partner with a range of community organisations to support their operations and projects
- We have a strong interest in communicating our activities and progress with our broad stakeholders



## Health

- Health promotion
- Community event



## Education

- School programs and visits
- Life Education



## Sport

- Community sport teams
- Sport events and promotion



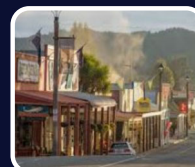
## Emergency Services

- Local unit support
- Volunteer recognition



## Environment & Heritage

- Trees that count
- Friends of Waitua



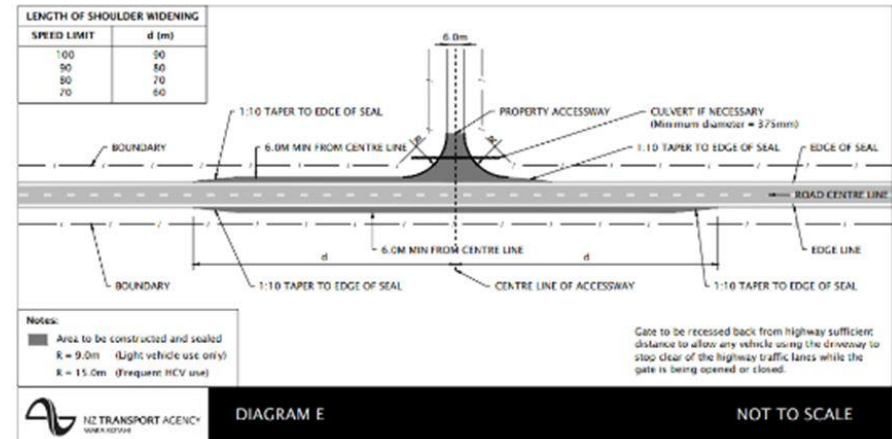
## Community & Arts

- Accommodation project & assets
- Local events, Art & culture

# Resource Consent Matters



- All permits and consents in place.
- Environmental monitoring program expanded.
- Waste Rock Stack footprint growth to design size.
- Power line and electrical infrastructure upgrade in progress.
- Water management enhancements.
- Geochem review with Mine Waste Management.
- Community information line maintained.
- State Highway intersection upgrade – Late 2024.
- CCTV monitors traffic movement.



# Employment

- Great opportunities on the West Coast.
- Currently recruiting for miners, trades, engineers and support staff.
- Commenced planned increase in workforce, roles will include
  - Surface and underground operations.
  - Technical & trades roles.
  - Management roles.
  - Entry level & traineeship
- Recruitment will focus on Coast & expand to broader NZ
- Advertising via LinkedIn, FaceBook online or local paper.
- Accommodation project with Council and local business



# Employee Value Proposition



- Values focused growth organisation and owner miner
- Emerging employer on the Coast with strong sustainability focus



- Long 10-year mine life and fully permitted operation
- Attractive lifestyle rosters offering work life balance
- Ability to be home every night if living on West Coast



- Private health insurance for staff with discounts for family members
- Regular performance review and benchmarked remuneration
- Employee bus service for residents of Greymouth and Reefton



- Career pathways and on the job training and development
- Refer a friend

- EAP service for employees and family members
- Uniform supplied and laundered
- Professional membership support for technical roles
- Some flexibility options for senior staff and office-based roles
- Close proximity to amazing beaches, wilderness areas, fishing, mountain bike riding, tramping and ski fields
- Easy access to Christchurch international airport (3 hrs)
- Host town Reefton has a population of 1000 people with two supermarkets, a range of services, education and medical provision and recreation centres (pool and gym)



• schooling options in Greymouth.

# Stay In Touch



## Our Website

[www.federationmining.com.au](http://www.federationmining.com.au)

## Mailing List

[info@federationmining.com.au](mailto:info@federationmining.com.au)

## Community Contact Line

03 732 7028

## Follow Federation Mining on LinkedIn

## Simon Delander

[sdelander@federationmining.com.au](mailto:sdelander@federationmining.com.au)

